



India Meteorological Department
(Ministry of Earth Sciences)

NATIONAL BULLETIN NO. 07

TIME OF ISSUE:1345 HOURS IST

DATED: 31.01.2023

FROM: INDIA METEOROLOGICAL DEPARTMENT (FAX NO. 24643965/24699216/24623220)

TO: CONTROL ROOM, NDM, MINISTRY OF HOME AFFAIRS (FAX.NO. 23093750)

CONTROL ROOM NDMA (FAX.NO. 26701729)

CABINET SECRETARIAT (FAX.NO.23012284, 23018638)

PS TO HON'BLE MINISTER FOR S & T AND EARTH SCIENCES (FAX NO.23316745)

SECRETARY, MOES (FAX NO. 24629777)

H.Q. (INTEGRATED DEFENCE STAFF AND CDS) (FAX NO. 23005137/23005147)

DIRECTOR GENERAL, DOORDARSHAN (23385843)

DIRECTOR GENERAL, AIR (23421105, 23421219)

PIB MOES (FAX NO. 23389042)

UNI (FAX NO. 23355841)

D.G. NATIONAL DISASTER RESPONSE FORCE (NDRF) (FAX NO. 26105912, 2436 3260)

DIRECTOR, PUNCTUALITY, INDIAN RAILWAYS (FAX NO. 23388503)

CHIEF SECRETARY, ANDAMAN & NICOBAR ISLANDS (FAX NO. 03192- 232656)

CHIEF SECRETARY, GOVT. OF TAMIL NADU (FAX NO. 044-25672304)

CHIEF SECRETARY, GOVT. OF PUDUCHERRY (FAX NO. 0413-2337575, 2334145)

CHIEF SECRETARY, GOVT. OF KERALA (FAX NO. 0471-232716)

Sub: Depression over Southwest Bay of Bengal

The Depression over Southwest Bay of Bengal moved nearly west-northwestwards with a speed of 16 kmph during past 6 hours and lay centered at 1130 hours IST of today, the 31st January, 2023 over the same region near latitude 8.6°N and longitude 83.9°E, about 290 km east of Trincomalee (Sri Lanka) and 510 km east-southeast of Karaikal (India).

It is very likely to move west-northwestwards till evening of today, the 31st January. Thereafter, it is likely to recurve gradually west-southwestwards and cross Sri Lanka coast between latitude 7°N to 8°N during forenoon of 01st February 2023.

Forecast track and intensity are given below:

Date/Time(IST)	Position (Lat. °N/ long. °E)	Maximum sustained surface wind speed (Kmph)	Category of cyclonic disturbance
31.01.23/1130	8.6/83.9	45-55 gusting to 65	Depression
31.01.23/2330	8.5/82.9	45-55 gusting to 65	Depression
01.02.23/1130	7.6/81.8	45-55 gusting to 65	Depression
01.02.23/2330	6.8/80.8	40-50 gusting to 60	Depression

Warnings:

(i) Rainfall (warning graphics enclosed)

- ❖ Light/moderate rainfall is very likely at many places over coastal Tamil Nadu & Puducherry on 31st January, over Tamil Nadu & Puducherry on 1st and 2nd February. Isolated heavy rainfall is very likely over south Tamil Nadu on 1st and 2nd February.

(ii) Wind warning:

❖ **Southwest Bay of Bengal:**

- Squally wind with speed reaching 45-55 kmph gusting to 65 kmph during 31st January to 1st February.
- Squally wind with speed reaching 40-50 kmph gusting to 60 kmph on 2nd February.

❖ **Along & off Sri Lanka coast:**

- Squally wind with speed reaching 45-55 kmph gusting to 65 kmph during 31st January to 1st February.
- Squally wind with speed reaching 40-50 kmph gusting to 60 kmph on 2nd February.

❖ **Gulf of Mannar and Comorin area and along & off south Tamil Nadu & Karaikal coasts:**

- Squally wind speed reaching 40-50 kmph gusting to 60 kmph during 1st to 2nd February.

❖ **Along & off north Tamil Nadu & Puducherry coasts:**

- Strong wind speed reaching 30-40 kmph gusting to 50 kmph during 1st to 2nd February.

(iii) Sea condition

❖ **Sea condition is likely to be rough to very rough**

- Southwest Bay of Bengal and along & off Sri Lanka coast during 31st January to 2nd February.
- Gulf of Mannar and adjoining Comorin area and along & off south Tamil Nadu coast during 1st to 2nd February

❖ **Sea condition is likely to be moderate to rough**

- Along and off north Tamil Nadu & Puducherry coasts during 1st to 2nd February.

(iv) Fishermen Warning (warning graphics enclosed)

Fishermen are advised not to venture into:

- ❖ Southwest Bay of Bengal, Gulf of Mannar, Comorin Area and along & off Sri Lanka and south Tamil Nadu & Karaikal coasts till 2nd February.

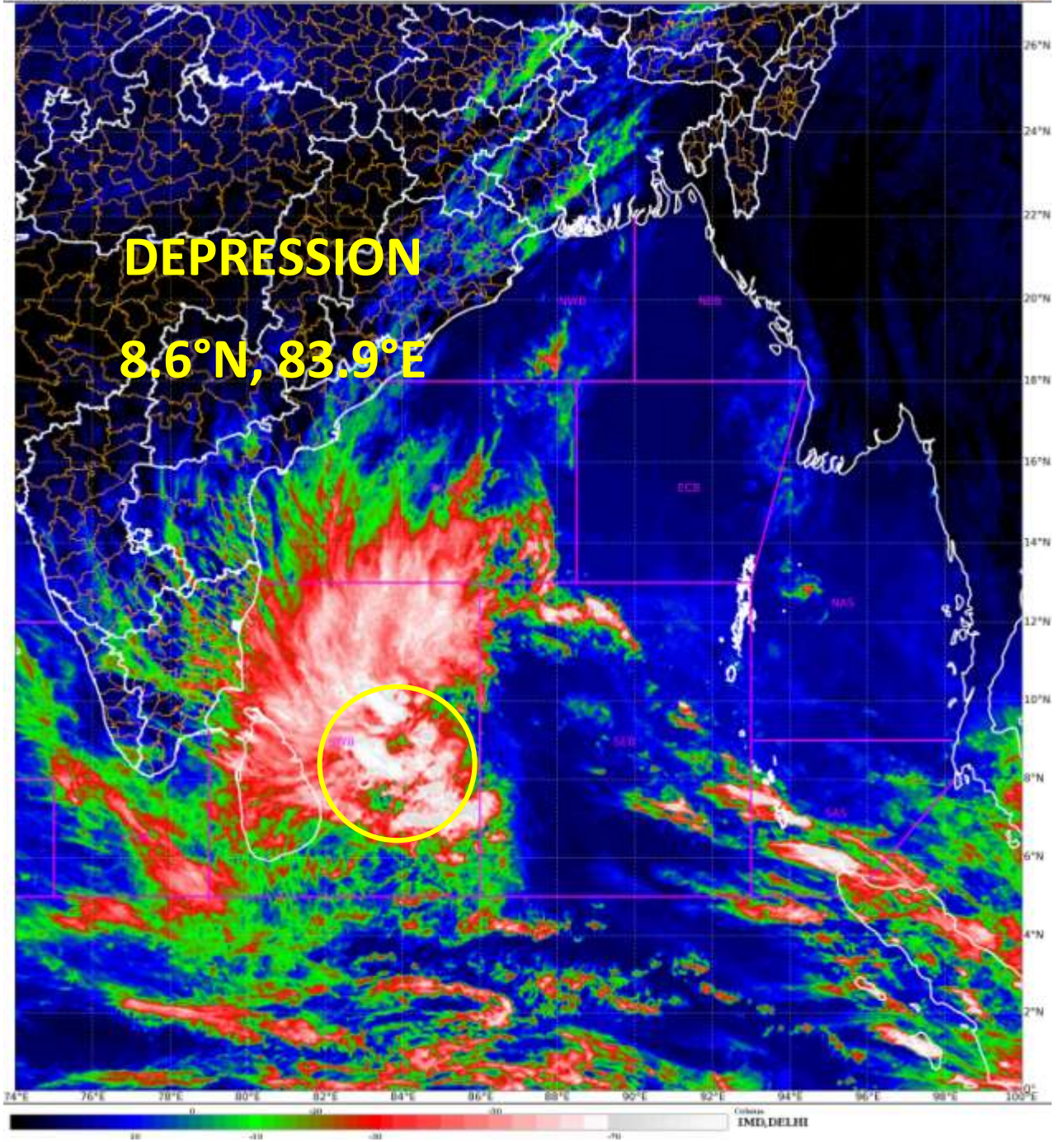
Fishermen out at sea off Tamil Nadu and Kerala coasts are advised to return to the coasts by 31st January.

The system is under continuous surveillance and the next message will be issued at 2030 hours IST of today, the 31st January, 2023.

**(Ananda Kumar Das)
Scientist F, Cyclone Warning, New Delhi**

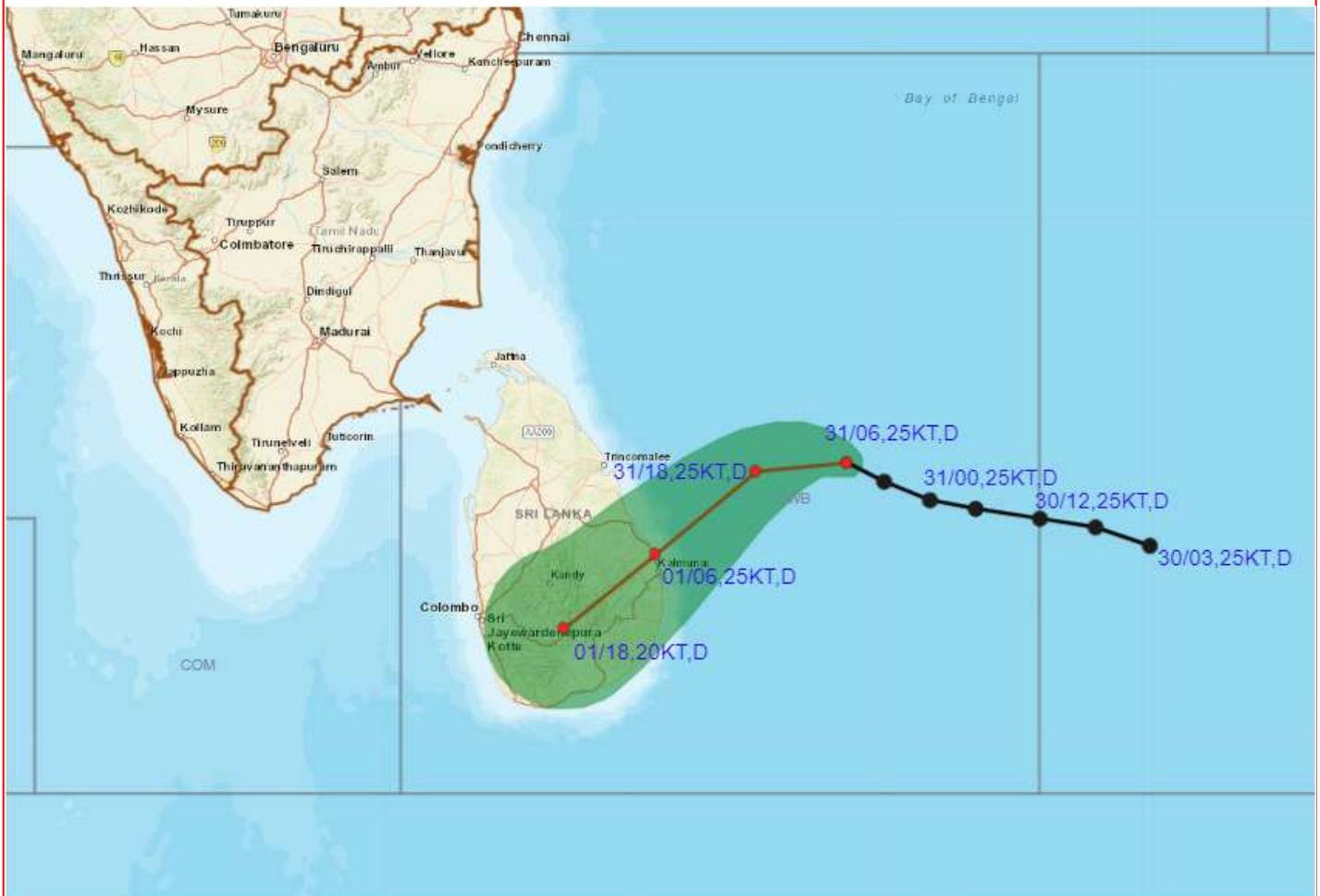
Copy to: ACWC Kolkata/ ACWC Chennai/ CWC Bhubaneswar/CWC Visakhapatnam/MO Port Blair

LEGEND: Heavy Rainfall: 64.5 to 115.5mm, **Very Heavy Rainfall:** 115.6 to 204.4mm **Most Places:** more than 76% of total stations, **Isolated Places:** Less than 25% of total





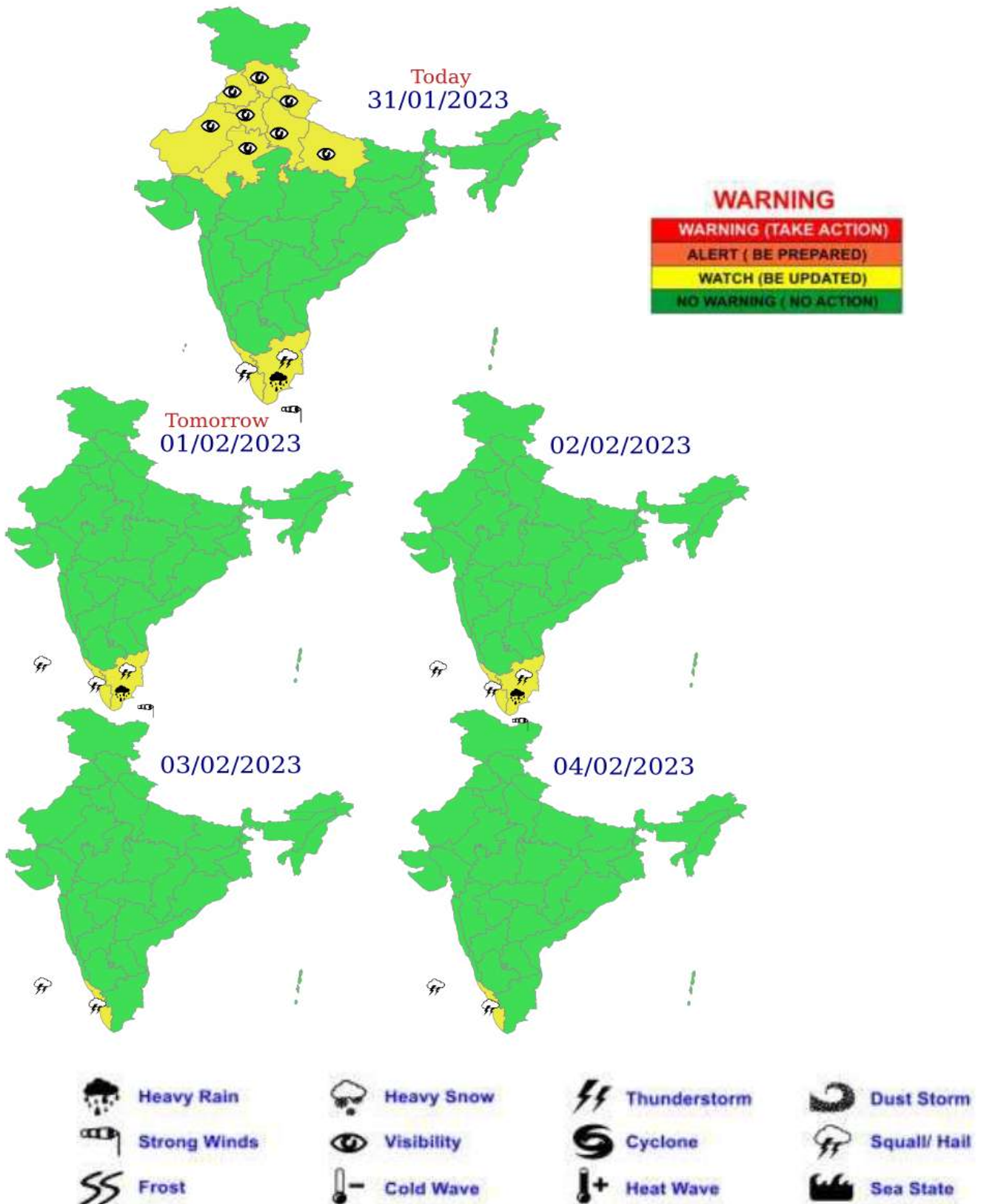
OBSERVED AND FORECAST TRACK OF DEPRESSION OVER SOUTHWEST BAY OF BENGAL BASED ON 0600 UTC OF 31st JANUARY, 2023.



DATE/TIME IN UTC
IST=UTC + 0530
L: LOW PRESSURE AREA
WML: WELL MARKED LOW PRESSURE AREA
D: DEPRESSION (17-27 KT)
DD: DEEP DEPRESSION (28-33 KT)
CS: CYCLONIC STORM (34-47 KT)
SCS: SEVERE CYCLONIC STORM (48-63KT)
VSCS: VERY SEVERE CYCLONIC STORM (64-89 KT)
ESCS: EXTREMELY SEVERE CYCLONIC STORM (90-119 KT)
SuCS: SUPER CYCLONIC STORM (≥ 120 KT)

- LESS THAN 34 KT
- 34-47 KT
- ≥ 48 KT
- OBSERVED TRACK
- FORECAST TRACK
- CONE OF UNCERTAINTY

Multi hazard Warning Graphics



Fishermen warning graphics



Squally WX with wind speed 40-45 kmph gusting to 55 kmph

Squally wind speed 45-55 kmph gusting to 65 kmph

Fishermen are advised not to venture into the marked areas.